

160  
YEARS  
1864-2024



BY APPOINTMENT TO  
HER MAJESTY THE QUEEN  
FURNITURE MANUFACTURERS  
STONEHAM PLC, SDOUP, KENT.

**STONEHAM**<sup>®</sup>

FINE FURNITURE SINCE 1864



DESIGNED FOR LIVING





## Contents

Welcome	1
A family business since 1864	2
The Latitude Collection	4
The Avant Garde Collection	20
Darwin/Holwood	22
Holwood	24
Elan	26
Autograph	27
Vibe	30
Cudham	34
Strata	40
Aspen	46
Edwardian	50
Ambience/Edwardian	56
Ambience Horizontal	58
Touch	62
Infinity	64
Diffuse	68
Flow	70
Fusion	72
Ligna	80
Pitch	82
Fahrenheit	84
The Heritage Collection	86
Knole Painted	88
Penshurst Painted	90
Penshurst	96
Scotney	98
Ightham	102
Bewl	104
Marlborough	108
Beyond The Kitchen	110
It's All In The Detail	118
The Inside Story - Storage	120
Utility/Concealment	126
Control Technology	127
Work Surfaces	128
Implementation	130
Sustainability	132
Thank You	



## Welcome to Stoneham kitchens...

...where the values we've been building into our bespoke kitchens for more than 160 years haven't changed. Every hand-built Stoneham kitchen is created using the finest woods and natural materials, the most innovative features and latest technology, supremely crafted to produce timeless design and dependable quality.



## A family business since 1864

When you choose a Stoneham kitchen, you choose a commitment to quality, the most rigorous standards of workmanship and an approach to kitchen design and supply that is responsible, dependable and guaranteed to give a lifetime of service.

Each and every Stoneham kitchen is hand-built to order, by craftsmen who take enormous pride in combining their knowledge and skills with the very latest engineering techniques and technology. We work with you to design and create a kitchen that suits your lifestyle and lasts a lifetime.

Stoneham has been designing and creating beautiful furniture for over 160 years and has been at the forefront of bespoke kitchen design since the 1950s. Family owned for five generations, Stoneham is proud to deliver consistent craftsmanship, uncompromising quality and unfailing attention to detail.



Left to right: Mike Stoneham – Works Director, Howard Stoneham – Sales Director, Adrian Stoneham – Managing Director.





William Hone Stoneham started the business in 1864.



Stoneham premises in Reginald Square, Deptford, circa 1864-1884. E.G. Stoneham (Snr) is pictured outside the building (circa 1935).



E.G. Stoneham (Jnr) standing outside the E.G. Stoneham and Son Empire Works at Watson Street, Deptford (1926-1959). The building, originally cowsheds, was converted into a factory building.



A Stoneham delivery vehicle, circa 1954 featuring the slogan "Adds Grace and Space".



This rare picture, taken around 1940, shows the large force of female factory employees at the time working on the manufacture of gas rattles, ammunition boxes and aircraft for WWII.



# The Latitude Collection

Stoneham has been designing and creating beautiful furniture for over 160 years with consistent craftsmanship, the most innovative features and unfailing attention to detail.

The **Latitude Collection** is a unique blend of handleless furniture brimming with creative options, innovative material and storage ideas.

Every kitchen is hand-built to order incorporating materials and technical components sourced from the finest suppliers. Individually crafted to suit your lifestyle and personality.

Stoneham furniture is at home anywhere – apartments, terraces or the largest family homes. Urban or rural settings.





Inspire creativity for a contemporary  
ambience in kitchen design – from  
cool and architectural themes to  
warm and homely tones.

**Main:** Ambience – Am. Walnut veneer (vertical grain)  
wall units, bar unit and slatted panelling to island.  
**Fusion – Vert Studio (SP)** – tall end base units.









**Main & Above:** Tall units and base units in Fusion – Vert Studio SP paired with Ambience H Light Oak Veneer (horizontal grain). Burnished Copper provides a spectacular framing effect to the ovens and further accent to the triple layer cornice. Floating shelving (52mm thickness) in light oak veneer incorporates discrete LED lighting.

**Right:** A recessed niche with a Burnished Copper surface creates a semi-floating effect to the ovens. LED lighting recessed into the outer surround adds eye catching detail.











**Main:** Inscribe in Thunder Grey SP/American black walnut veneer. This beautiful kitchen incorporates a large bar area with Stoneham's ribbed doors, cruciform wine rack, shelving and glass holder in solid walnut. Triple tier framing specified with a Burnished copper accent, adds to the allure.







RDO



**Main:** Inscribe in Thunder Grey SP/black handleless trims. The design features a delicate perimeter framing detail. The worktop vertical bifold unit continues the handleless theme with its subtle recessed pull niches.

**Top and middle:** A raised upstand to rear of the peninsular separates the downdraft hob from the upholstered booth seating area. Stoneham's conical table base/table top add to this convivial setting.

**Above:** The tall compact pantry with high capacity internal drawers provides storage with effortless access.



A wealth of creative possibilities to integrate modern kitchen furniture with your home's architecture, perfectly and unobtrusively. The **Latitude Collection** – brings relaxing, minimalistic style.

**Main:** Fahrenheit – Hickory Drift base units with a thoughtfully created breakfast bar niche is combined with tall units in Fusion – Moles Taupe.

**Right:** The breakfast bar has been designed to provide a "semi-floating" appearance – fully integrated within the island.

**Below:** Tall units and TV area are framed with 3 tier detailing that includes a Brushed Steel mid layer.









Elan HL, Fogged Oak tall unit and 3 tier island feature. Infinity HL, Snow HG gloss surface to base and wall units. Fogged Oak accent feature to cone, island and bar unit.





# Ambience Vertical





**Main:** This striking kitchen in a coastal property, is specified in Ambience - Driftwood Oak combined with Black-Handleless trims.

**Above & Below:** The distinctive vertical grain (Ambience V) is softened by the Driftwood colouration process. The design provides a calm unobtrusive façade for contemporary living.



Ambience Horizontal





RDO

Ambience features beautifully grained natural veneers in American Black Walnut or Oak. Specify Fogged or Anthracite Oak for a more muted tone. You can also choose between horizontally or vertically planked veneers.

It's a look that gives you the freedom to express your individuality and create a breathtaking modern kitchen.



**Main:** Ambience – American Black Walnut matched with Fusion – Classic White. Macassar veneers add exquisite detailing above the cabinetry and flanking the tall units.

**Above and Right:** Ambience V – Anthracite Oak veneers (base units). Fusion – Dove Grey (SP) wall units. A 3-tier curved back panel surrounds the peninsular design and LED lighting focuses the eye on Black & White Zebrano inset veneers.





# The Avant Garde Collection

## modern living

The Stoneham **Avant Garde Collection** features over 30 kitchen ranges that combine the best features of traditional build techniques with innovative design, to create a stunning new contemporary classic.

The slick 'lay-on' door design creates a modern aesthetic, complemented by a unique combination of features including inlaid veneers, painted finishes and laminates with solid timber, glass, steel and aluminium.

A bespoke Stoneham Avant Garde kitchen can be created to fit around the trickiest of architectural features, using the very latest fittings and ingenious storage solutions for even the most awkward of spaces. Plus, generous 500mm deep drawers incorporating the beautifully controlled closure mechanism, are an original fitting on all standard base units.





**Main:** 'Pocket doors' retracted into their niches reveal creative functional interiors.

**Left:** Ambience V – American Walnut doors teamed with Vert Studio wall panelling and bar niche.

**Top left:** Aspen – Cashmere and Sand Grey.



## Darwin/Holwood



Dobsons

Darwin's unique combination of framed doors with brushed steel recessed finger pulls creates an elegant, contemporary classic kitchen design. The furniture is factory-painted in a palette of contemporary shades - our bespoke option provides endless possibilities for paint colours and recessed handle back plates.



Dobsons





**Main:** Darwin - Anthracite Oak/Steel with Holwood below island hob area.

**Bottom left:** large island with bar support cylinder to seated area.

**Bottom right:** Tall units with triple panel detail in Anthracite Oak.





## Holwood



Holwood - smooth painted in a bespoke pale ivory hue, matched with a custom-designed island, painted in bespoke pebble grey. Coat/basket storage area also by Stoneham.





# Elan

Elan features uniquely seductive lines of horizontally planked American Black Walnut, American Light, Fogged or Anthracite Oak. These much sought-after real wood finishes make a stunning statement when contrasted with steel appliances, tambours or plinths and black mirror or opaque glass façades.

**Right and bottom:** Curved doors create a more fluid design. Olive Ash cones punctuate the island.

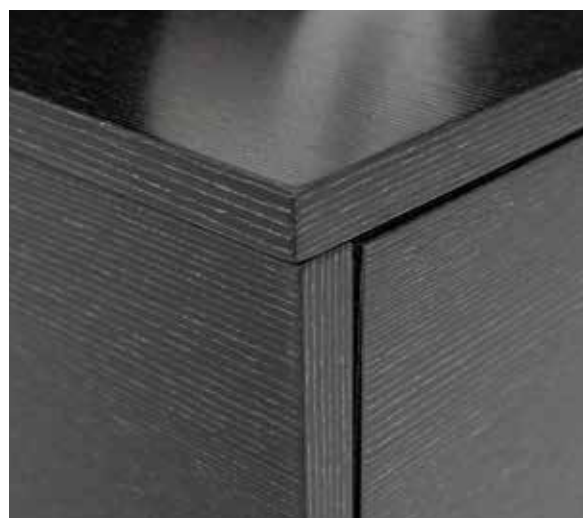
**Below:** The American Walnut drum unit incorporates a useful preparation sink.



Kitchen Matters

## Autograph

Autograph features a delightful collection of wood veneered surfaces for complete room designs or to add luxurious accents within a kitchen scheme or feature cabinetry. The options include Black and White Zebrano, Macassar, Black and Silver, Black Ebony, Smoked and Infused Oak.



**Main and left:** Black/Silver veneered surfaces have been selected for this floating TV cabinet and panelling. The subtle wrapped chrome pull provides discreet access to cabinet interiors.



# Autograph



Bradburys

Autograph's unique collection of veneered surfaces permits the designer to create distinctive and beautiful furniture without constraints. The images show a specially commissioned kitchen in Eucalyptus high gloss finish – the designer has incorporated wall cladding, flush room doors and a bespoke wine chiller cabinet.







**Far left:** The curvaceous island in Eucalyptus high gloss finish includes a subtle J-Trim at the top of doors.

**Near left:** Wall panelling, wine cabinet and room door to utility area are specified in matching veneers.





For a stunning, seamless kitchen design, the Vibe range provides an uninterrupted flow between door trims. The veneered surfaces in horizontally grained American Black Walnut or Oak are available in several stained options. The impressive island design features multiple layered surfaces and introduces Fusion (Handleless) from our Latitude Collection with unobtrusive brushed steel trims.







Vibe





Vibe's integral J-Trim provides a discreet, yet functional handle to doors and drawers. The design can be combined to create a striking visual effect, with ranges such as Infinity, Flow or Fusion Pro, giving contrast and emphasis to adjacent furniture.

**Main:** Vibe - American Black Walnut base units are framed by Corian worktops and slab sides.

**Left:** The island in Vibe American Black Walnut contrasts with furniture in Flow Silk selected for the rear wall area.

**Bottom:** Vibe - Anthracite Oak. The beauty of oak graining revealed beneath a contemporary grey façade.





# Cudham



RDO

Cudham's enduring classical lines permit kitchen designers to create beautiful, comfortable and practical room areas.



**Top & Middle:** The Wolf dual-fuel range cooker is the centre piece to the magnificent island.

**Bottom:** A bespoke pantry in American Walnut solid and veneer features engraved drawers, trays and pocket doors for added convenience.



# Cudham

Cudham's elegant, framed door features a slimmer profile and a subtle moulded inner frame detail. The façades and matching panelling can be specified in oak painted grained finish to provide subtle texture to the design. Alternatively, a smooth painted theme may be adopted throughout.

Stoneham's impressive range of finishes are factory painted with the option for fully bespoke colours too. A huge collection of accessories and features permit unlimited design possibilities.





**Far left:** Chimney breast detailing with antique mirror wall panelling.

**Top left:** Compact spice pantry in American Walnut interior provides rich contrast to Cudham's design. A frieze section adds a luxurious feature above the units.

**Main and left:** Island furniture – bespoke painted LG Cool Arbour. Tall Units – bespoke painted LG Serpentine.



# Cudham



Cudham - a modern classic with fine detailing and subtle character for timeless living. Matched here with black mirror glass tall doors and a large breakfast island. The Moles Taupe façades are just perfect.





# Strata



This striking Strata design lets the timber do the talking. In American Black Walnut with Macassar detailing to breakfast bar section and tall unit pilasters/capping, this is a Stoneham classic, designed for longevity beyond the transience of mere fashion.







# Strata



Barnfield



Strata features a distinctive, wide-bevelled, solid timber frame, enhanced and elongated with horizontally-grained centre panels. Steel handles produce a clean-lined, linear look. Strata is also available in Oak, Walnut, smooth or Oak painted finishes including our fully bespoke factory painted option.

Strata stands out from the crowd. Its five-sectioned drawer fronts with angular profiles create a look that is both modern and unique. Add black mirror glass to wall and tall units for a dramatic effect. Vertical, bi-fold wall units reveal functional interiors with minimal door intrusion. Strata is the kitchen for today's discerning homeowner.

**Main Right:** This large cabinetry run is punctuated by curved drawer units and convex glazed dresser units.

**Above Mid Bottom Right:** The versatility of Strata's design permit kitchen designer to introduce curved drum features and gentle convex or concave contour to islands.

Barnfield









This timeless Strata design combines Light Oak façades and Classic White painted features with accents to cornice and double quadrant columns.



# Aspen



**Main:** Aspen OP - Base units in Blue Hague OP, wall units in Classic White OP with Light Oak detailing. Milled solid black nickel handles.





# Aspen

A design classic. Sturdy framed doors made from Solid Oak or Walnut are matched with vertically grained veneers. The finish options include normal, stained and oak painted surfaces.

Aspen fits perfectly with modern living in contemporary apartments, traditional homes, and architecturally featured properties. The clean lines match steel plinths and handles particularly well and combine superbly with muted and pale shades on wall units.

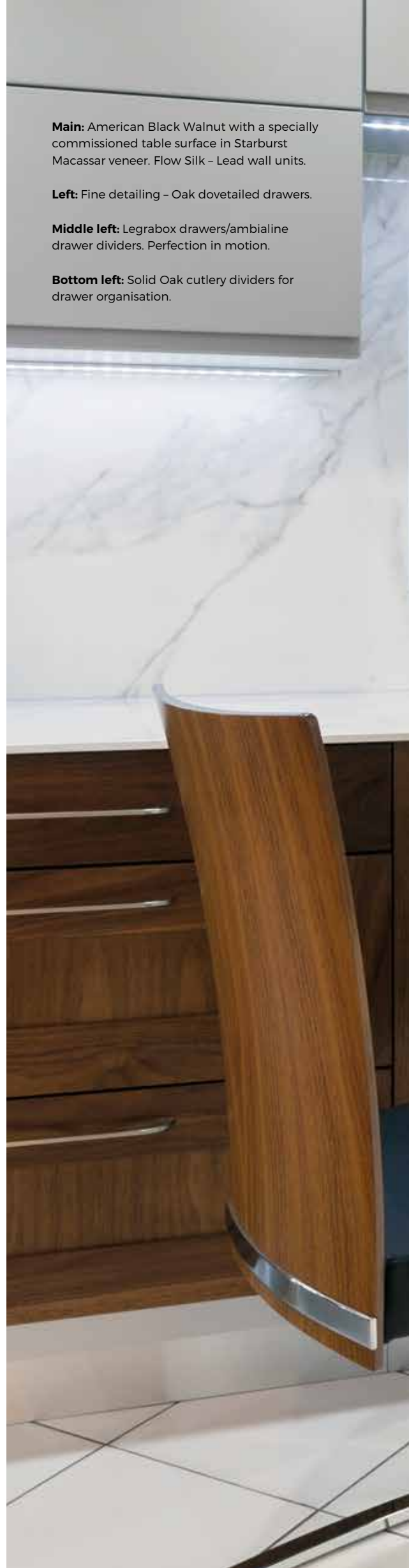


**Main:** American Black Walnut with a specially commissioned table surface in Starburst Macassar veneer. Flow Silk - Lead wall units.

**Left:** Fine detailing - Oak dovetailed drawers.

**Middle left:** Legrabox drawers/ambialine drawer dividers. Perfection in motion.

**Bottom left:** Solid Oak cutlery dividers for drawer organisation.







# Edwardian

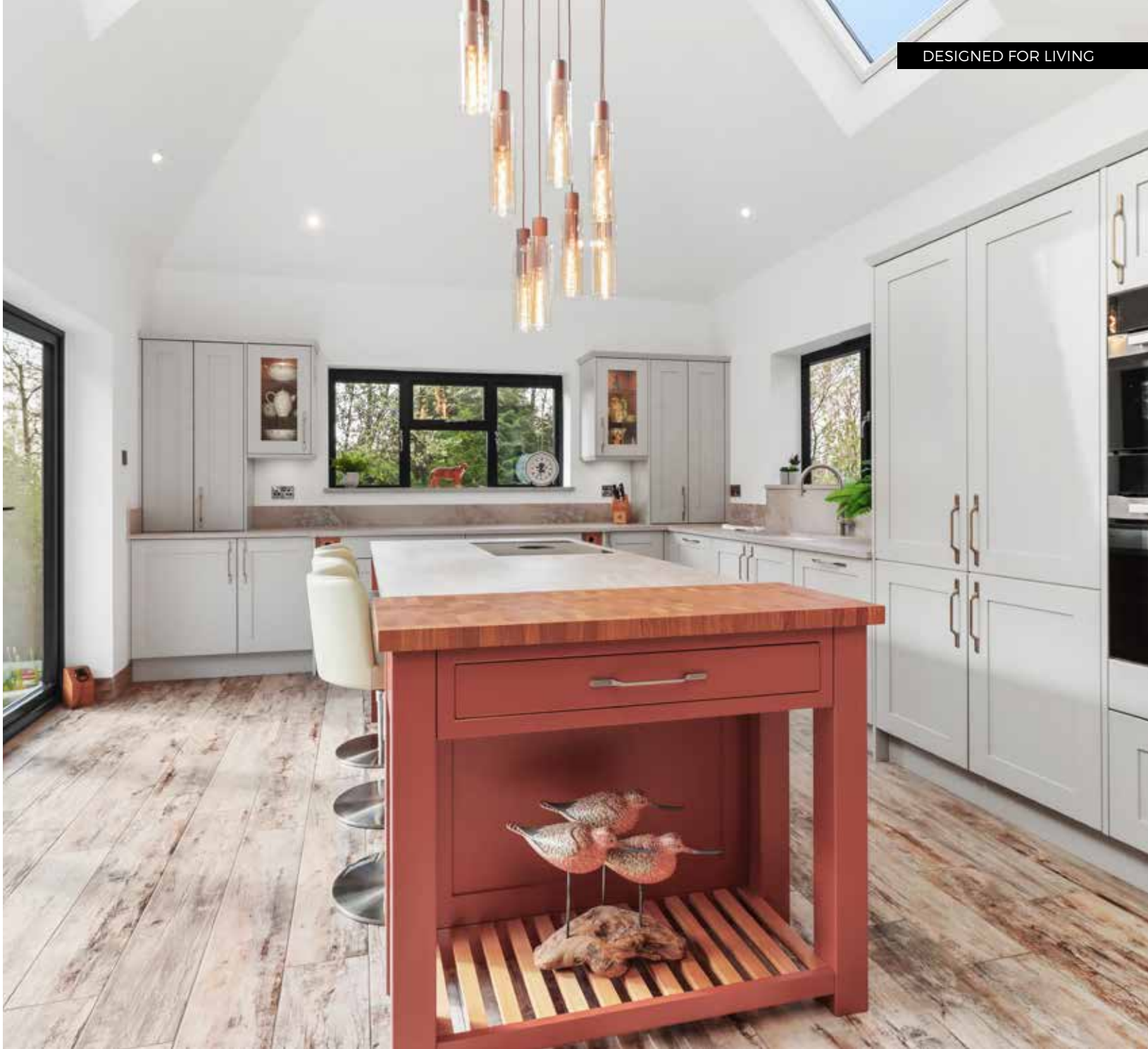


Metamorphosis

Edwardian's simple, elegant framed doors provide a perfect blank canvas for creative design. Factory-painted in an impressive selection of contemporary colours or painted in situ. To match other features in your room, the result will be a highly individual kitchens.



**Main and Above:** A bold statement island in Edwardian Burnt Orange incorporates a breakfast bar and is teamed with Cashmere base and tall units.



**Main:** One flank of the island bar has an open pot rack with light oak slatting and a butcher block end-grain chopping worktop above.

**Above & Left:** It's small details that makes a home. Solid Oak serving trays and wine storage niche for 32 bottles.



# Edwardian



RDO

Stoneham offers a mouth-watering menu of accessories to accentuate Edwardian's design features and introduce shape, flow and definition to the room. A host of innovative storage solutions make Edwardian as functional as it is beautiful.





**Main and left:** Edwardian – Dove Grey smooth painted furniture with contrasting Blue Hague (SP) to island and glass backsplash. Flow Steel handles complete the design.

**Far left:** An impressive solid, Walnut table is part of the island design and supported by a matching cylindrical column.



# Edwardian



Cardiner Haskins

**Main & Right:** With a love of interiors and pink hues the owner was keen to incorporate this delicate shade into the room to complement the pink décor seen throughout the house.

**Far Right:** Cinder Rose SP a romantically dusty pink is specified on island façades. These are contrasted with Blue Hague (Dark Blue) tall cabinetry. Milled solid brass handles complete the beautiful detailing.







Gardiner Haskins



## Ambience/Edwardian



Dobsons

**Top:** Edwardian range in Thunder Grey creates a chic look to the main cabinetry. The dark hues are contrasted with the natural tones of horizontal light oak veneer from our Ambience collection. The overhead bulkhead matches the island's proportions and incorporates extraction and pendant lighting.

**Bottom Right:** Vertical bifold doors conceal the breakfast pantry - cereals, toaster, jams, coffee machine and much more.





Ambience Horizontal





**Main:** Ambience Vertically grained American Walnut matched with solid brass milled handles and Vert Studio wall panelling (T&G horizontally) and island panels.





## Ambience Horizontal

If you're seeking a contemporary twist on a classic kitchen, look no further. Black mirrored glass, a three-tier curved island with Black and White Zebrano cornice detailing – sophistication doesn't come higher than this. Bespoke details such as the triple layer worktop echoing the cornice appearance and solid Anthracite Oak T handles add charm and personality. The inclusion of brushed steel brings an appealing contrast to the componentry.

Like all Stoneham ranges, mixing and matching is the name of the game. Choose from an expansive range of luxurious materials, including glass, steel, veneer and solid timber, then incorporate the latest appliances and storage technology to create a kitchen, which is truly your own.

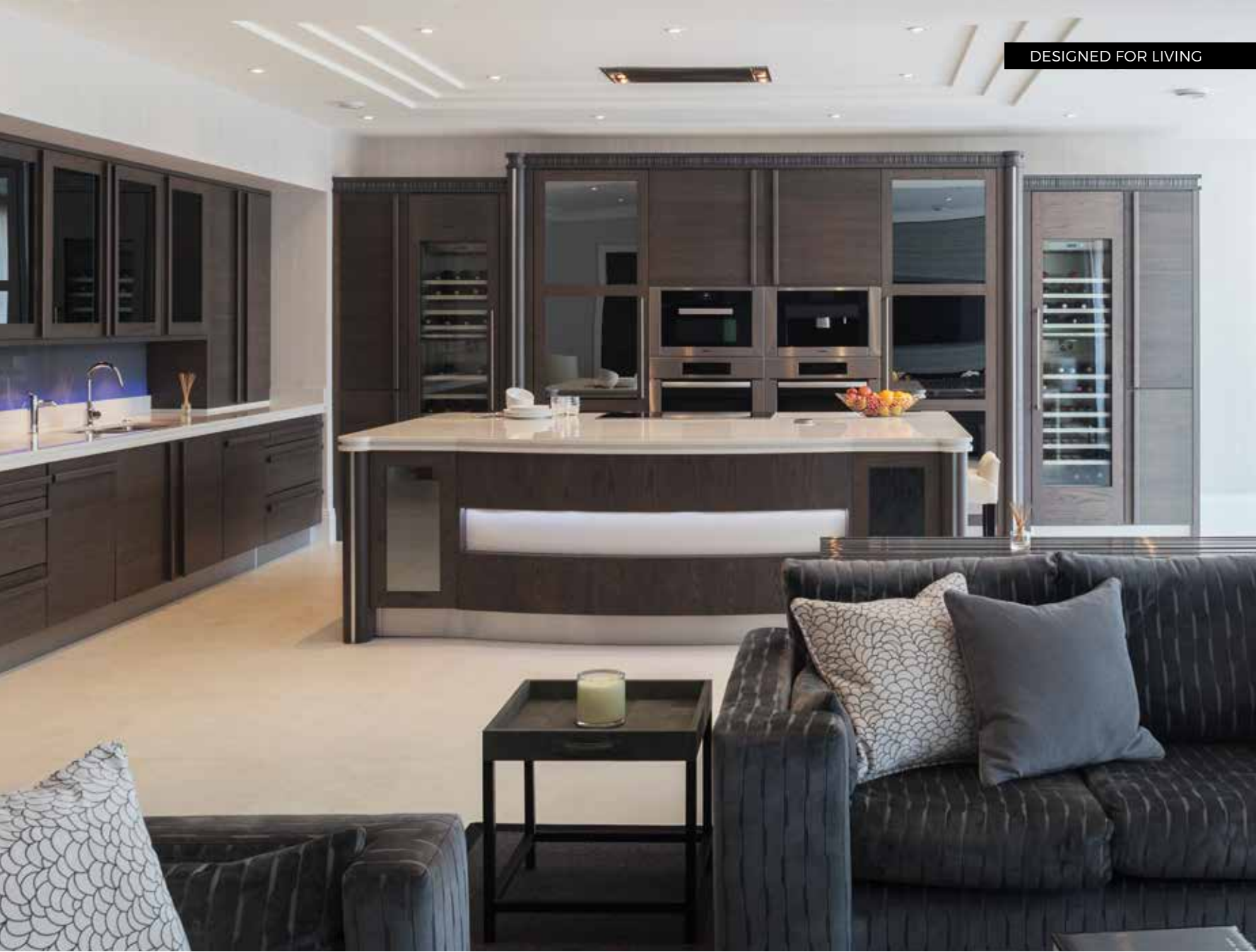


**Top and bottom far right:** This substantial island in Anthracite Oak and steel, features a three-tier curved design and niche seating.

**Below:** Anthracite Oak units with Black and White Zebrano capping. Bespoke solid T bar handles.

**Right:** Three-tier worktop with centre steel section.







# Touch



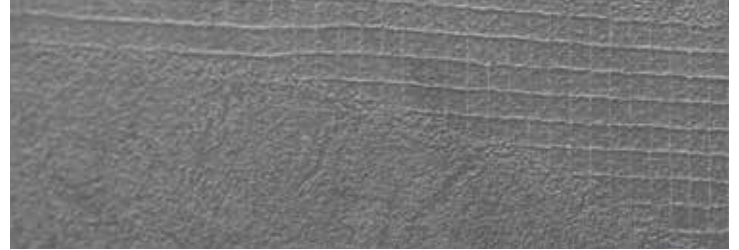
**Main:** Black TX surfaces add drama to tall units.

**Bottom left:** Jupiter TX – an alluring abstract design with pizzaz.

**Bottom right:** The inside story – capacious internal drawers – perfect access and supreme functionality.



A unique collection of door surfaces combine stunning textures with contemporary colours and outstanding practicality. Touch can be specified as a complete room theme or combined with timber or plain colour to great effect.





Infinity





Infinity inspires highly contemporary design. The choice of eight high gloss surfaces all feature a matching edge. Whether your scheme is bold contrast or more subtle pastel shades, this is a design without constraint.



**Main:** A kitchen design featuring bold contrasts with an abundance of modern appliance technology and clever storage solutions.

**Top:** Low level media cupboards complete the room design.

**Above:** Under-mounted sink with waste disposal air switch and filtered water SWICH®.

**Right:** 60mm Quartz surfaces incorporate LED under-lights and a retractable extraction hood.





# Infinity





The Infinity design combines brilliantly with other colours for contrast, or with timber if the appearance is to be softened. Mixing colours and textures not only adds personality to your kitchen, but creates a wonderfully eclectic look too. The beauty of Infinity is that the design options are almost...well...infinite.

**Main:** Infinity – Show HG Latitude Collection and Holwood – Anthracite Oak/Steel.

**Top left:** Infinity – Cloud HG with AutographBlack and White Zebrano accents and Raspberry glass breakfast bar – a final touch of pizzazz.

**Bottom middle:** Black and White Zebrano accent with sculptured handle adds a luxurious touch.

**Bottom right and left:** Handleless trim in Brushed Steel.





Diffuse





Diffuse is the perfect design partner for timber or abstract surfaces or for complete room schemes. The super-matt finishes with matching edges are available in popular neutral tones. For real impact specify Graphite, Fir Green or perhaps Paris Blue for a cool theme. Featured here is Diffuse Cashmere furniture with touch to open function. The island design is softened with bespoke curved shaping in Anthracite Oak.



# Flow

Flow provides a look and feel that is smooth, uncluttered and striking in its clean simplicity. Beautiful smooth painted façades with integral J-Trim deliver a minimalist, uninterrupted finish that is both streamlined and timelessly classic. In keeping with the minimal aesthetic, Fusion doors with partially recessed handles complete the tall unit run and utilise the full wall space.





**Main:** Large island specified in Pipe Grey, 20mm Dekton Nilium worktops and Dove Grey tall units.

**Far left:** Storage pantry in American Walnut can be swiftly concealed by pocket doors – shown tucked into their niches.

**Left:** Streamlined, uncluttered, symmetry.



# Fusion





Stonebridge Interiors

As the name suggests, Fusion is the perfect base for uniting colours, texture and surfaces for a highly creative look. Its simple design is equally effective when specified as a complete room concept or blended with other ranges to contrast or accentuate selected areas or features. Stoneham has the palette, design skill and technology to create your kitchen in the hues you choose, complemented by the textures and materials that will complete the perfect picture. Just pick a colour.

**Main:** Fusion Vert Studio accents to back panelling and island combined with Ambience V – American Walnut.

**Left (top and bottom):** Vert Studio is a powerful yet fresh contemporary shade.

**Below:** Milled solid brass handles blend beautifully with stronger colours.





# Fusion

Fusion – Sink run and tall units in striking Blue Hague. Push to open doors for a seamless façade.







# Fusion



**Main:** This large kitchen in Dove Grey SP features an impressive island incorporating a Stoneham bespoke booth seat and table base in Anthracite Oak. The convex shaped rear of island has a beautiful 3 tier design with LED lighting.

**Right:** The hob controls are positioned on the cabinetry façade for a more streamlined appearance to the cooktop.





# Fusion



This amazing social living space features Fusion in Dove Grey. Modern, clean lines are punctuated by Macassar accents to island surrounds and panelling to end of unit runs. Seating in abundance for plenty of guests!

David Haugh



David Haugh



David Haugh



Ligna





The subtle timber effect grain structure combined with six hard wearing, plain colour surfaces are totally on trend for the contemporary kitchen. Create accents in contrasting materials for open shelving. Integrate architectural features, appliances and seating for a soothing balance. Design without constraint.



Pitch





Understated simplicity – the subtle outer groove detail on the Pitch range, surrounds the perimeter of all panels. A smoother façade than a fully framed door and arguably more eye-catching than a totally plain design. Available in smooth or oak painted finishes – the design combinations are limitless for individuality.

**Main:** The client desired symmetry for the tall unit run and this included a stunning spice pantry, a space tower and a secret passageway door opening to a utility room.

**Left (Middle):** A bespoke bar area specified with pocket doors that neatly slide away at “opening hours”.



# Fahrenheit

Fahrenheit encompasses a collection of latest generation contemporary surfaces including stone, concrete and timber with synchronised structures. Mix and match plain colours with abstract patterns. Integral handles provide a streamlined appearance or choose from our latest collection of contemporary handle colours and shapes. The design possibilities are limitless.



**Main:** Onyx doors to base units. Cloudy Oak wall units and Pentimento wall cladding. Tall units in Touch - Black TX with handleless vertical trims in Brushed Steel.







# The Heritage Collection

## Classical in-frame styles

Built to last, designed to make a lasting impression

Characterised by its in-frame construction, a kitchen from the Stoneham Heritage range imbues a sense of solidity and long-standing values. Fine materials and time-honoured detailing combine with integrated design features to deliver a look that is classic but capable of endless variation. Traditional and contemporary styles are available, all with the latest kitchen technology, incorporating innovative features and fittings designed to enhance functionality and maximise efficiency.

Whatever your choice, you can be sure your Heritage kitchen will delight you and your family, add style and value to your home and stand the test of time.

**Main:** Knole kitchen in bespoke Connaught Blue with brass hinges and handles.

**Below:** Walnut detailing adds further luxurious allure to the pot rack and mantle shelf with corbels.





## Knole Painted

The hub of the home - this Knole kitchen is spectacular in F&B Railings. It provides a most elegant, practical and homely environment for all the key activities in the home. Cooking, eating and socialising - creating many memories for years to come.





**Top:** A bespoke bar unit in solid/veneered Light Oak is revealed by pocket doors - retracted into their niches.

**Middle and bottom:** The large island features a pot rack in slatted solid Oak and worktops with concealed LED lighting - emitting a soft ambient glow at night. Plug-in integrated into the furniture frames.





## Penshurst Painted

Tall ceilings in this elegant room permit the kitchen design to include double tier wall units. Push to open door functionality was specified on upper cabinetry for visually uncluttered façades. Kitchen design in Penshurst Painted – Classic White.





## Penshurst Painted

**Bottom:** A large chimney breast feature is flanked by a beautifully appointed bar unit with pocket doors for added convenience.

**Below (Left Top):** Cruciform wine storage units in light oak veneer compliment the design.



Sapphire Spaces

Sapphire Spaces

This large island features the Stoneham pot rack with slatted solid timber base (American Black Walnut). Cabinetry in Vert Studio OP.







Elegant and timeless with in-frame detail, Penshurst Painted is a true modern classic. Impressive, practical islands with panelled end columns, walnut open shelving and wine racks, partially glazed wall units and wide functional drawers combine to stunning effect.







**Main and below right:** A magnificent island in specially commissioned Burr Oak centre panels set amidst light oak frames.

**Top right:** Character Oak's beautiful random grain in evidence on this island, flanked by corner columns.



With its moulded frames and fine features, Penshurst is a timeless classic. It combines traditional craftsmanship and in-frame styling with contemporary materials and high-tech features to maximise access, convenience and storage capacity. Available in Oak, Character Oak, Walnut and bespoke painted finishes.



**Information:** Character Oak is selected to include the timber's natural knots and shakes. Colour and character variation will be prominent by design. Some minor secondary surface checks may occur on Oak after installation.





## Scotney



Scotney is a classic in-frame kitchen that will add a touch of elegance to every house. Centre panels on doors are raised to provide exceptional detail and our repertoire of factory finished, smooth painted surfaces permit total personalisation. Beautifully panelled surfaces to island and intricate feature plinths add spectacular refinement.







Scotney





**Main and above:** Large storage areas can be swiftly revealed or concealed by vertical Bi-fold door units. Shown here with a walnut veneered interior. T-shape island design – the focal hub for cooling, prep, dining and entertaining in style.

**Left:** TV and media areas form part of the overall room design in a modern kitchen.

**Below left:** Charge your phones, tablets and other devices within the drawer. Discreet cable concealment and wonderful phone-free amnesty at the dinner table!

**Below right:** In-worktop bottle chiller, a perfect temperature for your favourite tipples!





Ightham





Ightham incorporates the beauty of solid Oak frames and Oak veneered panels with greater emphasis on the graining. The grain is enhanced by a brushing technique to provide a distinct structured finish which is then visible beneath the painted surface. Our broad palette of colours can be further supplemented by the bespoke paint colour option for a truly individual kitchen. The square-shouldered frame provides a crisp, fresh façade that is timeless in its appeal.

**Main and top:** Ightham's striking enhanced oak grain is evident beneath the Mussel Painted façade.

**Bottom:** Extra width polished nickel cup handles combine with matching knobs to enhance Ightham's timeless appeal.



# Bewl

The in-frame Bewl range features flush doors combined with the classical framed surround. Oak grained or smooth painted facades can be finished in colours from our sumptuous palette or a fully bespoke shade of your choice.





Bewl



Stonebridge Interiors





**Left:** This beautiful converted old mill set beside a stunning river view inspired the choice of colours and the vibrancy of the dawn of spring. Bewl furniture in Chalk Blue and F&B Pitch capture this theme perfectly.

**Above:** For a lovely property overlooking the coast, the oak painted structured door from Stoneham's Bewl range were selected in Starry Host – a sea inspired blue shade. Other cabinetry was finished in Mussel. Accessories and worktops were carefully selected to continue the feel of a traditional bright sea hut.



# Marlborough



Marlborough's marriage of innovative design and traditional craftsmanship creates an environment that is both invitingly contemporary yet pleasingly classic. Matched with steel, black mirror glass and polished granite, the rich hues and lustrous grain of American Black Walnut are sublime.



TEC Lifestyle



**Top:** Contemporary yet classically framed furniture in Marlborough range form this imposing central island design finished in Anthracite Oak. Shown here with 3 tier curved back panelling to island seating area with Black & White Zebrano centre detailing.

**Above & Right:** Solid Iroko chopping boards nestle in the bar unit and the island upper tier worksurface incorporates a single bottle wine chiller.





# Beyond The Kitchen

## beautiful furniture

At Stoneham, we receive frequent requests from our customers to create fitted furniture for many other rooms, beyond the kitchen. Whether it's a playroom, a bar, a study, a media room for all the family, a bathroom or bedroom, we have the experience, the technical know-how plus all the creativity to provide you with an outstanding, fully bespoke service.

Our discerning buyers and production designers have access to some of the finest veneers, timber and innovative technical fittings, and can provide beautiful, functional storage solutions throughout the home.



- 1:** Working from home. Integrate a suitable space with the room design.
- 2:** Boot/Utility Room. A place to conceal sports and school bags, shoes and coats.
- 3:** A dedicated media wall - cabinetry, shelving and lighting to blend with the kitchen design.



TEC Lifestyle



Stonebridge Interiors



TEC Lifestyle



Stonebridge Interiors



Stonebridge Interiors



Stonebridge Interiors

**4 and 5:** A sumptuous bathroom with floating walnut cabinetry and discreet pull handles.

**6 and 8:** A bathroom peninsula softened by curved cabinetry and recessed handles – shown here in Vibe – Anthracite Oak.

**7:** The TV is wall fitted onto panelling to match the kitchen. The units below feature ribbed frontals and conceal hub positions for Sonos and Sky TV routers.



# Beyond The Kitchen

- 1:** Home Bar - a relaxing tippie in comfortable surroundings.
- 2:** The boot room seat, the "naughty" seat or just the secluded reading seat within the kitchen. Shown here with T&G panelling.
- 3:** Wine storage in American Black Walnut.
- 4:** Stunning circular bar design in Black Walnut, Macassar and Satin Walnut, Corian and solid Black Walnut bar surfaces.
- 5:** Pocket doors conceal an in-cupboard preparation area with sink and tap.
- 6:** Vertical wine unit storage flank the inverted glass storage shelf.
- 7:** This large bar area can be swiftly concealed with vertical bi-folding doors.







Kitchens International



# Beyond The Kitchen



5



**1, 2, 3 & 4:** Bespoke booth seating built to match the contour of the island, wall or open space. These can be upholstered in cushioning and fabric to your requirements by local upholstery specialists.

**5:** A wall space in a hallway entrance can become an organised, tidy area for shoes and bags.

**6:** A muddy pet/"wellie" solution. The built-in wash area can be integrated into a utility room with seamless materials and a flexible shower attachment.

RDO

6





## Beyond The Kitchen

**Main:** Bedroom robe units - Anthracite Oak.

**1:** A Sepia Oak walk-in dressing room with bespoke garment hanging and storage drawers.

**2:** Fitted living room storage and floating shelves add the finishing touches.

**3:** Wine storage in American Black Walnut.

**4:** Lounge - low level cabinetry in American Black Walnut.

**5:** Floating shelves, antique mirror panelling, and discreet LED lighting are important in this gorgeous "drinks" area.

**6:** Fully bespoke Light Oak open shelving and handle-less storage cupboards in this library area.



Culina & Bagno



TEC Lifestyle



# Its All In The Detail

So often the inclusion of a specific design detail, be it a shape or an exotic material, can make a significant difference to a room. Just as a little jewellery can enhance the simplest of garments, so it is with furniture. Consider veneer inlays in Ebony Macassar, Burr Oak or Pippy Poplar. LED lighting can be carefully concealed beneath work surfaces or flyover shelving, while mirror glass adds a gloss surface in an otherwise textured design. Even engraved names on chopping boards or drawers can provide a flourish of individuality. Our approach to furniture making will make your experience a very personal one.

- 1:** Panelled ends to unit run and vertical frieze above the cabinets.
- 2:** Door accent in Black and White Zebrano.
- 3:** Double quadrant pilaster and cornice. Light Oak and White accents.
- 4:** Flyover shelving in Walnut/Ebony Macassar with mini LED lighting.
- 5:** Semi-floating oven appearance created with Burnished Copper panelling and Oak framing cabinetry.
- 6:** Burr Oak veneer adds natural beauty.
- 7:** LED lighting radiates via clear glass worktop edge above curved units.
- 8:** Internal dovetailed drawers in American Walnut.



**9:** Triple layer pillars and Walnut cornice, complete with mirror-effect polished steel. A beautiful frame for your kitchen units.

**10:** Eye-catching double quadrant pillars matched with Black and White Zebrano cornice.

**11:** Open pot rack for the classiest islands. American Walnut contrasts superbly with painted accessories.

**12:** The Pitch black furniture is exquisitely framed with a triple layer of Black Oak and Macassar veneers.

**13:** Engraved names on chopping boards, drawers and accessories personalise your room.

**14:** Worktop support cone in dramatic Olive Ash.

**15:** A simply exquisite three-tier island with the opportunity to add interesting shapes, LED lighting and contrast materials.

**16:** Black mirror glass frontals in Light Oak frames conceal this Gaggenau fridge/freezer.

**17:** Solid brass milled handles, dovetailed joints – it's all in the detail.

**18:** A bespoke "Lazy Susan" in solid Iroko. Names engraved to your requirements.









# The inside story

Evident in the design and manufacture of our kitchen ranges, Stoneham's attention to detail applies in equal measure to our selection of the finest kitchen accessories, appliances and features. This accessories section shows a host of clever, efficient, space-saving ideas to make your kitchen as practical as it is beautiful.

## ARENA

Arena® is the latest innovation in kitchen storage, providing improved functionality for shelving and baskets. The contemporary, sleek, anthracite steel bands surround an anti-slip shelving system that limits the movement of stored objects while opening and closing doors and accessing cupboard interiors.

**Main:** This magnificent pantry unit - commissioned with Oak Veneered interiors, solid oak dovetailed drawers with scooped handles and engraving. Spice racks fitted to upper doors.

1. Anthracite steel bands epitomise the minimalist styling - Arena®
2. The impressive anti-slip shelf system is a standard feature throughout the Arena® range.
3. The magic corner unit glides into view with its impressive anti-slip shelf system - Arena.
4. The remarkable Le Mans carousel makes storage simple and completely accessible for base and intermediate height units. The magic corner unit glides into view with impressive anti-slip shelf system - Arena®
- 5+6. These cleverly designed slimline pull out units are suitable for bottle storage, towel rail, cooking trays and racks. At only 150mm width they are most useful.
7. The Le Mans carousel system features a soft close mechanism for complete comfort in use.





## Be creative... Mix and match a wide range of accessories and storage solutions



**1:** Legrabox internal drawers. Effortless access to storage.

**2:** Dynamic Space Tower. Glass sided Legrabox 'FREE' drawers for enhanced visibility.

**3:** Tall units with internal storage drawers. Supreme storage access and 40kg capacity per drawer.

**4 & 8:** Legrabox drawer with Orgaline storage dividers – magnetically positioned to drawer sides.

**5:** This 200mm width pull out features Legrabox drawers for total practicality.

**6:** Dynamic Space Tower. Everything to hand immediately.

**7:** The pull-out table is an excellent solution for extra working space. Choice of two models.

**9:** Tall pull-out storage with anti-slip shelving and anthracite rail sides.

**10:** Pull-out base storage units feature anti-slip shelving.

**11:** One of many waste bin solutions by Stoneham. Waste segregation and re-cycling made easy.

**12:** Pull out storage trays with finger jointed detail.

**13:** Concave curved drawer provides effortless storage access.

**14 & 15:** Dovetailed drawer box construction with a solid wood divider.









# Storage





**1.** Supreme, accessible interiors with the Lavido pull-out storage - 170kg capacity soft open/soft close (left) and the pantry system with separate door racks (right).

**2.** Door rack system is supported by the carcass for maximum strength.

**3.** Convoy Primo larder. View and reach the contents of your larder with ease - 130kg capacity and anti-slip shelving too.

**4.** The pull-up lift platform can be simply raised and lowered.

**5.** The  $\frac{3}{4}$  carousel permits the doors to be swivelled around with the mechanism. Perfect access to corner storage.

**6.** Fitted as standard, the sink unit drip tray prevents damage to cabinet interiors or structural joints that could be caused by accidental spillage.

**7.** Bespoke drawer interior for Nespresso capsules.

**8.** Drawer storage units. Each individual plate organiser lifts out.

**9 & 11.** Vertical bi-fold dressers reveal and conceal swiftly. Storage for kitchen appliances, food or even microwave integration.

**10.** Floating shelves with integrated LED lighting.

**12.** Base unit with concealed inner drawer at top.

**13.** Glass shelving makes good use of a corner niche.

**14.** Drawers can be divided and organised to suit your spice jars.

**15.** The shallowest of spaces can be brought to life and have purpose.



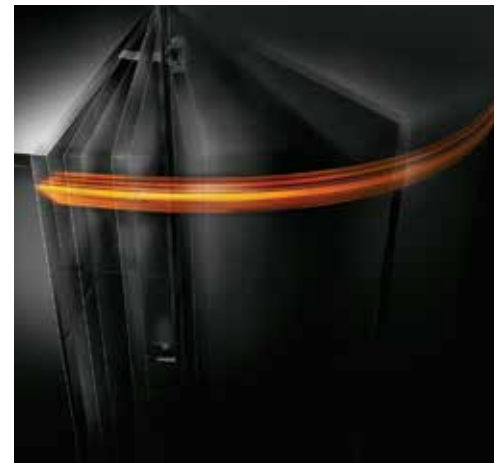
# Utility/Concealment





## Perfecting motion for doors Soft-close BLUMOTION

With BLUMOTION you'll never again have trouble closing kitchen doors or drawers. Whether it's a door, a shallow cutlery drawer, or a deep and wide storage drawer, with the BLUMOTION system, the result is a soft, controlled and slam-free closing action every time. Even the smallest doors close with one silent and graceful action. Simply switch BLUMOTION on or off.



With integrated BLUMOTION, the perfect motion is achieved when opening and closing. Drawers and high-fronted pull-outs can open automatically using an optional electrical drive. A light touch or light handle pull creates freedom of motion and high opening comfort.

**1 and 2:** Vertically stacked washing machine and tumble dryer - saves floor space. The Butler sink is practical and capacious.

**3:** Conceal boiler, pipes and valves in purpose built units. Removable internal panels for servicing access.

**4:** Boot room. An organised space for coats, boots and outdoor paraphernalia.

**5:** This pull-out ironing board can be folded and pushed into a small concealed furniture niche.

**6:** Freestanding washing machine concealed by oversized door and slim hinge arrangement.

**7:** BLUMOTION has also been integrated into the AVENTOS lift mechanisms used to control the elevation action on overhead cabinets. This adaptive soft-close system ensures faultless, soft and controlled closing of the overhead cabinet doors, no matter their size, weight or configuration. It means the door can be opened effortlessly, to any desired position, and closed with the slightest pull to secure a soft and safe re-seating of the door.

**8:** Wide folding fronts. If the lift mechanism is used on both sides, large, heavy fronts can also be used.

**9:** High quality lift motion with variable stop.

**10:** Base unit with concealed inner drawer at top.





## Work Surfaces – granite, glass, timber...

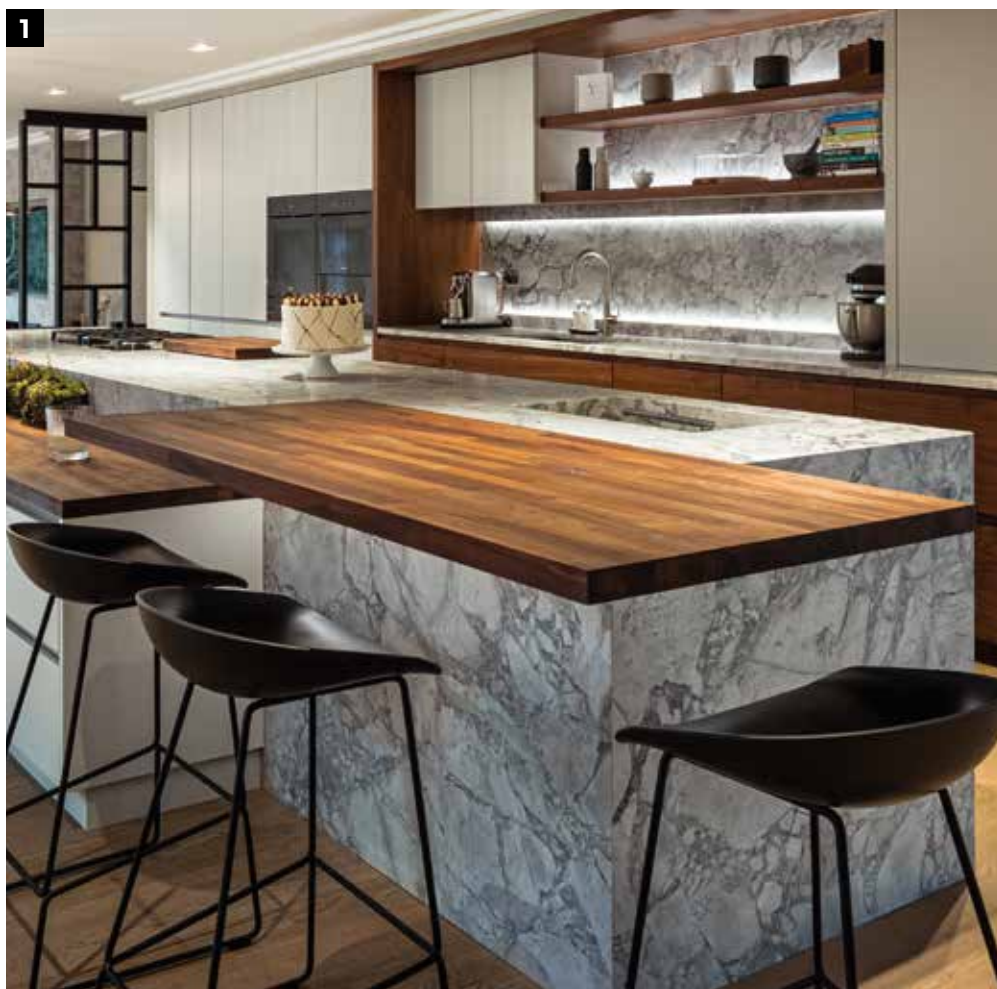
Available in a wide choice of materials, designs and colours, a huge range of worktops will enable you to find exactly what you need to enhance your Stoneham kitchen. Solid timber, polished granite and stainless steel will help your kitchen exude luxury. Consider glass, in its many guises, for breakfast bars or other surfaces in room design. High-pressure laminates are particularly hard wearing, while the highly flexible Corian worktop can be moulded into drip trays, splash-backs and sinks for the ultimate in streamlined finishes.

**1:** Stunning use of Quartz to worksurfaces, back panelling and island unit sides and rear. Solid walnut tops at multi-layers add definition and warmth to the design.

**2:** Spekva solid brushed grained tops with oiled surfaces.

**3:** The island incorporates a Bora venting hob and large social seating area.

**4:** Large island with Double Roman moulded edges – 60mm thickness.





**5:** This cylindrical-shaped unit features bespoke solid timber work surfaces shown here in American Black Walnut.

**6:** Three-tier island feature with glass breakfast bar feature.

**7:** A solid timber circular worktop overlays the island corner. Bespoke steel rings beneath.

**8:** Solid Walnut 40mm thickness bar area surmounts the distinctive Quartz tops.

**9:** Starburst Macassar work surface - bespoke veneering to your design

**10:** Neolith work surface with mitred built-up edge (100mm thickness)

**11:** Under-mounted steel sink with draining grooved in Quartz work surface.

**12:** Port sockets provide power supply to awkward spaces such as corners and island units. Simply push away when not required.

**13:** Flip top - power sockets rotate to a flush surface when not in use.

**14:** Solid Walnut teardrop-shaped breakfast bar fits snugly to the rear of a curved island.





## Implementation – a total service



BY APPOINTMENT TO  
HER MAJESTY THE QUEEN  
FURNITURE MANUFACTURERS  
STONEHAM PLC. SIDCUP, KENT.

Our philosophy is simple. Whether creating a totally new kitchen or extending or refurbishing an existing one, every project we undertake is as important to us as it is to you, for our reputation is at stake.



The decision to invest in a new kitchen requires thorough research, expert advice, in-depth discussion and the security of professional workmanship. Careful consideration on all aspects of design, installation, plumbing, electrics and interior decoration is essential. A Stoneham Appointed Kitchen Specialist makes this entire process a comprehensive, professional and seamless experience.

### **Something of a dream**

From the moment you step into a Stoneham Appointed Kitchen Centre you will be surprised how easy and enjoyable the whole process is. Each spacious centre displays a wide selection of kitchens in room settings so you can see how different styles, colours and combinations can work in a home.

Every Stoneham kitchen is made to order which means that every Stoneham kitchen is an original masterpiece. Expert kitchen designers take time to guide you through the vast repertoire of accessories and features so as to match your kitchen perfectly to your needs.

With a Stoneham Appointed Kitchen Centre you'll be surprised how easy and enjoyable the whole process is.



Frequently listed as a major selling point in property advertising, the cachet of a Stoneham kitchen adds appeal and value.



### Bespoke designs

If you want to preserve or enhance unusual architectural features, or even create a few new ones yourself, we undertake specially commissioned designs with great pleasure and enthusiasm.

### With you every step

Every Stoneham Appointed Kitchen Centre offers a comprehensive professional service so you can choose as many or as few services as you require. But whether you opt for the whole design, installation and decorative service or prefer to work with your own sub-contractors, you can rest assured that your Stoneham kitchen will be crafted by hand and fine-tuned by technology.

### Your first step

Our network of Stoneham Appointed Kitchen Centres is in place throughout England, Scotland and Wales to serve you. So, to take your first step, please call our sales line **020 8300 8181** or visit **[www.stoneham-kitchens.co.uk](http://www.stoneham-kitchens.co.uk)** to find the Centre most convenient to you.





# Sustainability



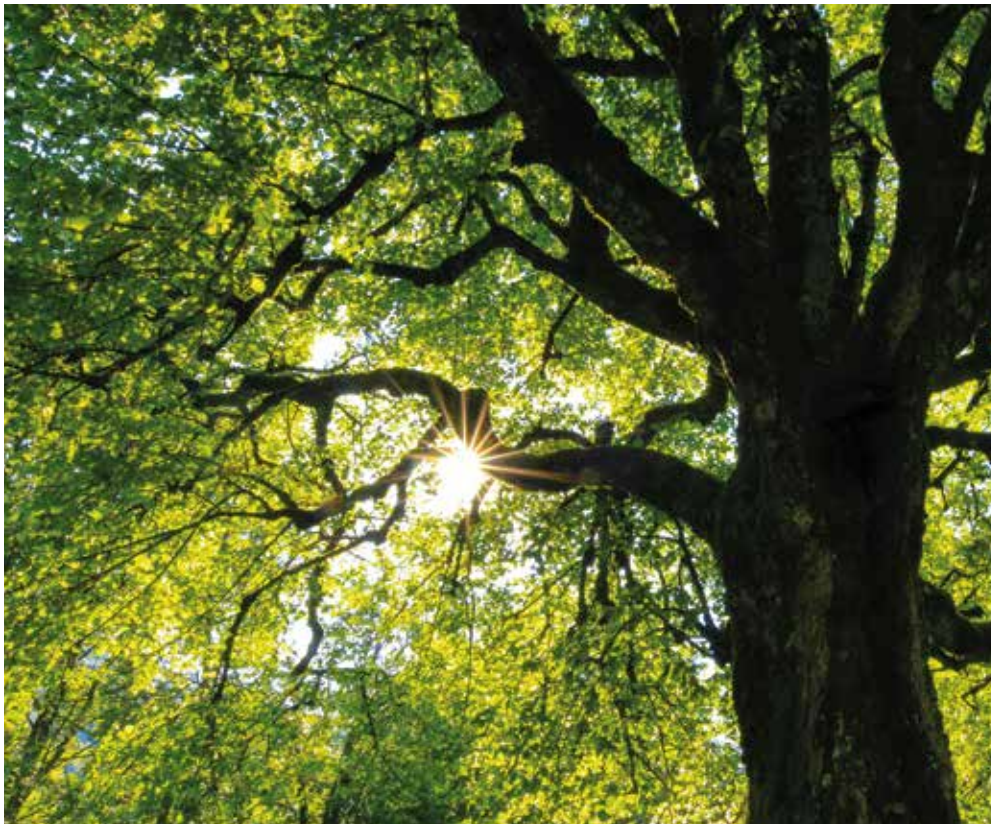
Stoneham's directors wholeheartedly recognise the imperative to be environmentally considerate, which is why in all areas of its activities and policies, Stoneham, supports ecological sustainability.

With best practices observed, wood products are the ultimate sustainable and recyclable materials, thermally efficient in use and requiring low energy consumption to process.

From our suppliers, we actively seek proof of their commitment to continuous improvement in environmental performance, information on the source of wood products and evidence of good forest management practice. As a company policy, Stoneham will only source materials from suppliers who are operating ethically within the laws of their countries. In areas such as transport, energy use, filtration plants, waste disposal and health and safety requirements, the company aims to adopt environmental standards that do more than just comply with legal requirements, but which go significantly further – to promote the highest environmental standards and fully integrate environmental considerations into our operational decision making.

In addition, Stoneham has been certified as a member of the BFM Health and Safety Certification Scheme, which is recognised by the Association of British Insurers.

Stoneham incorporates some of the finest materials and components available and the sheer longevity of our furniture means it will surpass whims of fashion and premature obsolescence. This alone is a most important statement in carbon footprint reduction.



The information contained in this brochure was accurate at the date of going to press. However, Stoneham reserves the right to alter prices and specifications and to withdraw units at any time. Timber and veneer are used extensively in our product range. Careful selection of materials is used. However, as they are natural materials a variety of grain structures and slight colour variations should be expected. The colours shown in this brochure are as accurate as the printing process allows. Designed and produced by Yello Fish Ltd. Tel: 07813 067675. Email: gretchen@yello-fish.com

# Thank you

Every Stoneham kitchen is designed and built to meet the individual needs and tastes of our customers, so we simply don't have a warehouse full of furniture we can photograph. We only photograph kitchens in our customers' homes or those in our Stoneham Approved Kitchen Centres.

I therefore wish to express my sincere gratitude to all our customers who kindly granted us access to their homes. Without their support and understanding, we would not be able to show you many of the stunning kitchens you see in this brochure.

We very much look forward to working closely with you on your new project.

A handwritten signature in white ink that reads "Adrian Stoneham". The signature is written in a cursive style with a horizontal line underlining the name.

Adrian Stoneham





Stonebridge Interiors



BY APPOINTMENT TO  
HER MAJESTY THE QUEEN  
FURNITURE MANUFACTURERS  
STONEHAM PLC, SIDCUP, KENT.

**STONEHAM**<sup>®</sup>

FINE FURNITURE SINCE 1864

Stoneham plc  
Powerscroft Road, Footscray, Sidcup, Kent, DA14 5DZ, England.  
Telephone: 020 8300 8181  
E-mail: [kitchens@stoneham.plc.uk](mailto:kitchens@stoneham.plc.uk)

V: 10/23

[www.stoneham-kitchens.co.uk](http://www.stoneham-kitchens.co.uk)

